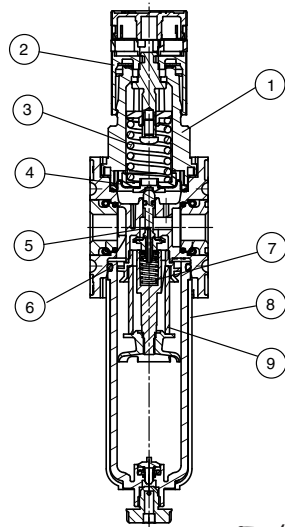


# Filter regulator

# FUTURA-SERIES

item	type	KFRG-238/* G	KFRG-212/* G
port size		G 3/8	G 1/2
description		sinter filter centrifugal principle, Diaphragm-type pressure regulator with secondary air exhaust	
medium		compressed air, neutral gases	
mounting		vertical	
medium- and ambient temperature		max. 50 °C	
supply pressure		Pe max. 16 bar Pe min. 1,5 bar semi-automatic and fully automatic drain	
reduced pressure [3]		0,5-8 bar Standard 0,1-1 bar, 0,1-2 bar, 0,2-4 bar, 0,5-10 bar, 0,5-16 bar	
filter element		5 µm Standard	
bowl volume		filter: 49 cm <sup>3</sup>	
drain model		semi-automatic	
fixing		control panel installation, mounting bracket, wall mounting	
weight		0,680 kg	



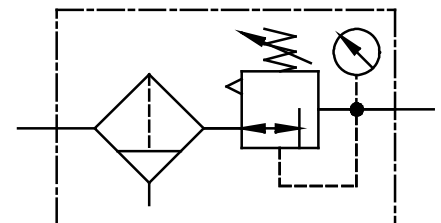
## parts

( Service-Kit: KESA.2-1311 )

no.	designation		material	order-no.
1	spring cage	FH.2-600	POM	---
2	setting knob	FH.2-625	POM	---
3	spring	FED.2-703	galvanised steel	---
4	membrane	C.22-75	brass-NBR-PA6	ES
5	valve cone	VK.2-420	brass-NBR-POM	ES
6	o-ring 37,5x2,5	OR.0-5	NBR	ES
7	spring	FED.2-720	stainless steel	---
8	condensate bowl	BE.2 HA4	polycarbonate	90002.0200
9	filter element 5µm	C.22-26	cellpor	5.2122.26.000

## Handhabungs-Hinweis

- Filter transmittance according to ISO 4003, glass bead test
- Setting knob can be locked by pressing downwards
- Regulator head lockable
- interlocking of several individual devices requires coupling kit(s) KKOP.2



## series 2

## ordering information

**KFRG - \*\*\* / \* \***

type

[1] port size

[2] accessories

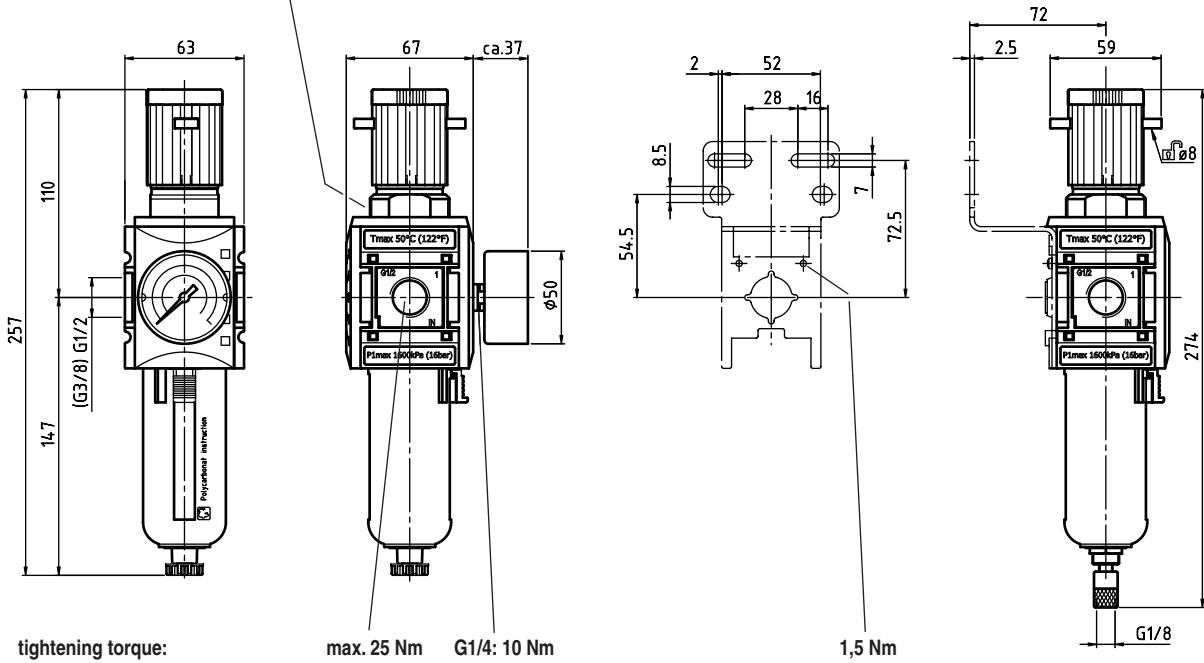
[3] reduced pressure

ordering example: KFRG-212/8 G

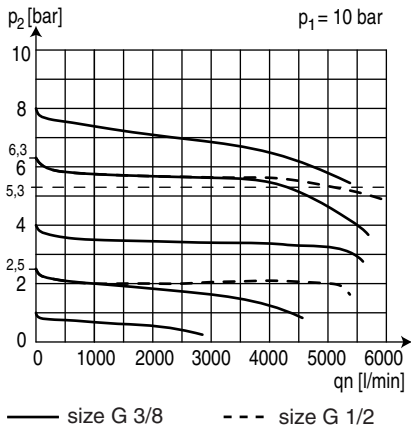
[1]	port size	
	238	G 3/8
	212	G 1/2
	238 NPT	3/8-18 NPT
	212 NPT	1/2-14 NPT
[2]	accessories (see reverse side)	
	S	control panel nut
	H	metal bowl with level indicator
	AM	fully automatic drain pressureless open
	AM NC	fully automatic drain pressureless closed
[3]	reduced pressure (see item table)	
	e.g. 8	0,5 - 8 bar

## dimensions (mm)

tightening torque for control panel nut: 9 Nm

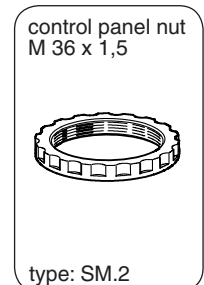
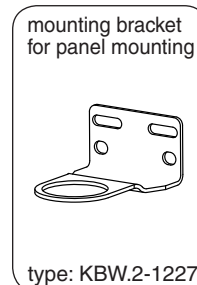
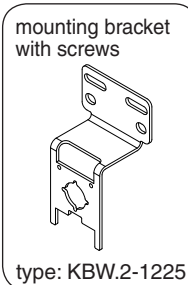
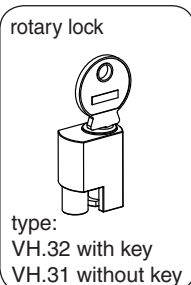
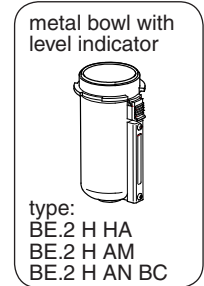
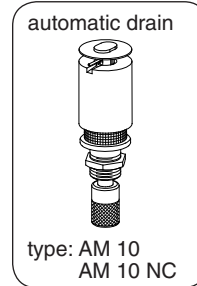
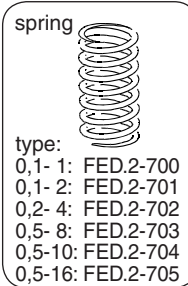
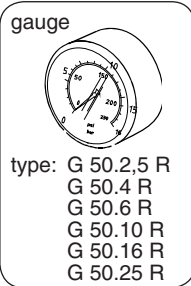


## flow characteristic



## accessories

2



## pressure characteristic

